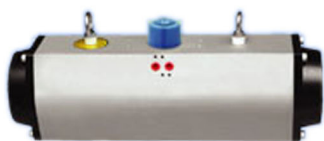




# FLUCON®

Fluid Control Systems

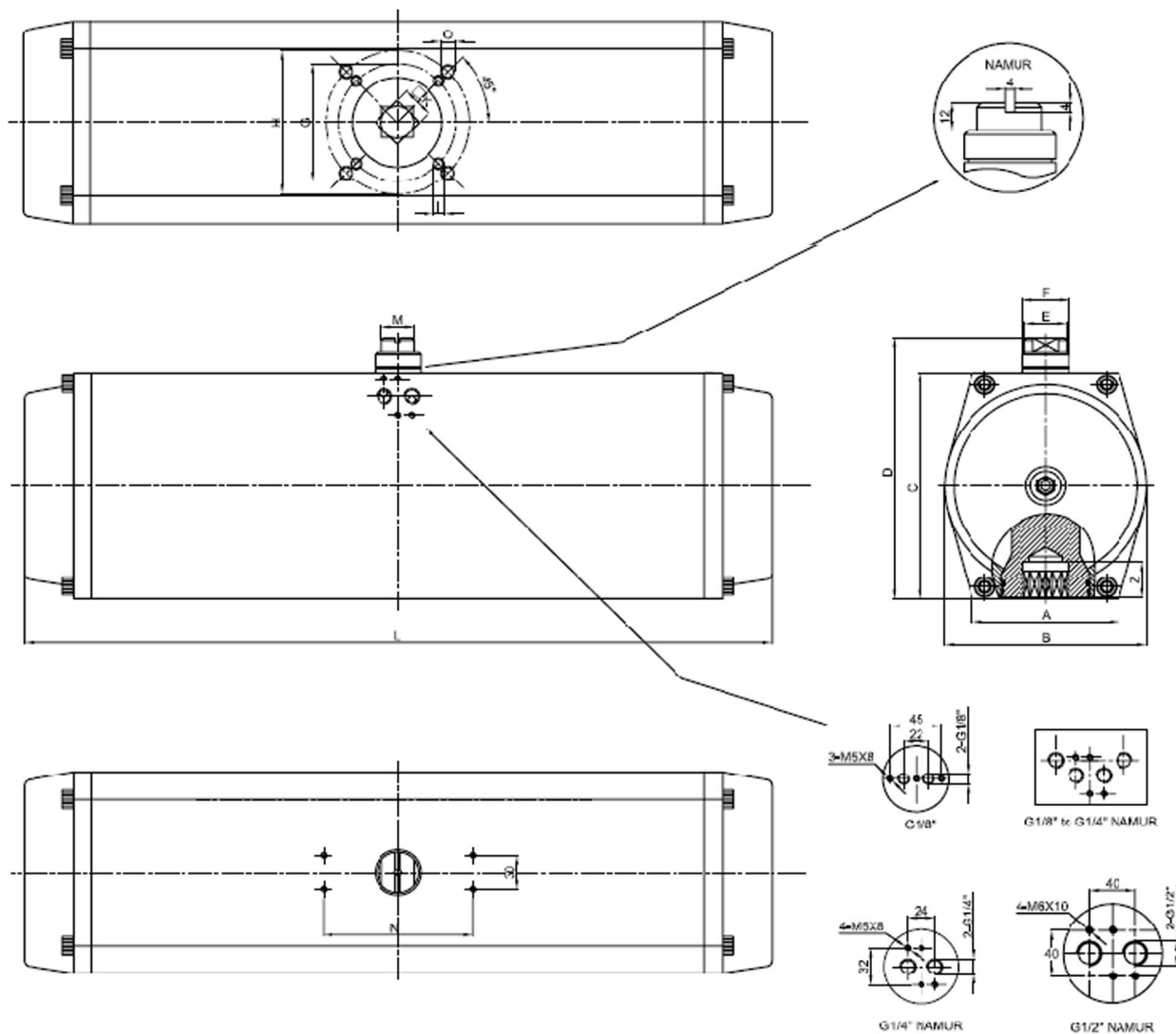


## Pneumatic Actuator (Special Strokes) - Special Strokes Pneumatic Actuator

### Design

In order to meet the special requirements of control valve we produced special strokes actuators on customer request (60°, 120°, 145°, 180°, 360° etc.). The output torques and mounting Dimension of the actuators with double acting can be found by consulting the relative tables of ALPHA standard series actuators.

### Dimension



Model	A	B	C	D	E	F	G	H	I	K	L	M	N	O	Z	Air Connection
B-45	48	58	65	95	12	14	Ø36	Ø50	M5x8	11	204	10	80	M6x10	14	G1/8"
B-52	50	59	74	104	12	14	Ø36	Ø50	M5x8	11	210	10	80	M6x10	14	G1/8"
B-63	60	72	88	118	12	18	Ø50	Ø70	M6x10	14	243	10	80	M8x13	18	G1/8"
B-75	65	83	100	130	12	18	Ø50	Ø70	M6x10	14	258	10	80	M8x13	18	G1/8"
B-83	67	90	109	139	14	18	Ø50	Ø70	M6x10	17	298	10	80	M8x13	21	G1/8"
B-92	76	104	120	150	18	25	Ø50	Ø70	M6x10	17	360	14	80	M8x13	21	G1/8"
B-105	90	115	133	163	19.5	25	Ø70	Ø102	M8x13	22	386	14	80	M10x16	26	G1/8"
B-125	103.5	140	155	185	28	40	Ø70	Ø102	M8x13	22	426	20	130	M10x16	26	G1/4"(1/4"NPT)
B-140	107	152	171.5	201.5	28	40	Ø102	Ø125	M10x16	27	565	20	130	M12x20	31	G1/4"(1/4"NPT)
B-160	128	175.8	197	227	36	40	Ø102	Ø125	M10x16	27	652	28	130	M12x20	31	G1/4"(1/4"NPT)
B-190	135	206	230	260	45	60		Ø140		36	753	32	130	M16x25	50	G1/4"(1/4"NPT)
B-210	135	226	255	285	45	60		Ø140		36	760	32	130	M16x25	50	G1/4"(1/4"NPT)