



## CNK 410N Limit Switch Boxes (Explosion Proof)

### Design & features

CNK-400 series are designed suitable for valve and actuators in hazardous area application, having compact but robust construction conforms to EN50014 and 50018, also suitable in Zone 1 and 2, and ingress protection IP67. Standard aluminum housing provides reliable explosion proof performance.



The CNK -400 Series Limit Switch Boxes have three models. One is CNK -410N (mechanical), second is CNK -420N (Proximity Sensor), and third is CNK -430N (4-20mA feedback).

- Aluminum die-casting housing and powder coated
- Secure waterproof, multi-angles visual valve positions involving top and side view
- Spring loaded splinted cam. No need to adjust again after initial setting and Easy setting without tool
- Standard 8 points and enough strips for connection (10 points for optional)
- Dual cable entries: 2×G1/2 (Standard) and 2-M20×1.5, 2X1/2NPT (Optional)
- No worry to loose bolts while cover opens with captive cover bolts

-NAMUR standard shaft and bracket

- Explosion proof is ExdII BT6 (standard).

-2-SPDT mechanical switches as standard (0.6A125VDC, 0.3A250VDC, 16A125/250VAC) and Proximity sensors as option (P16AM-D3N:8~30VDC,  $\leq 150\text{mA}$  or P&F sensors NJ2-V3-N:8VDC, Detected  $\leq 1\text{mA}$ , Not detected  $\geq 3\text{mA}$ )

### Structure and Material

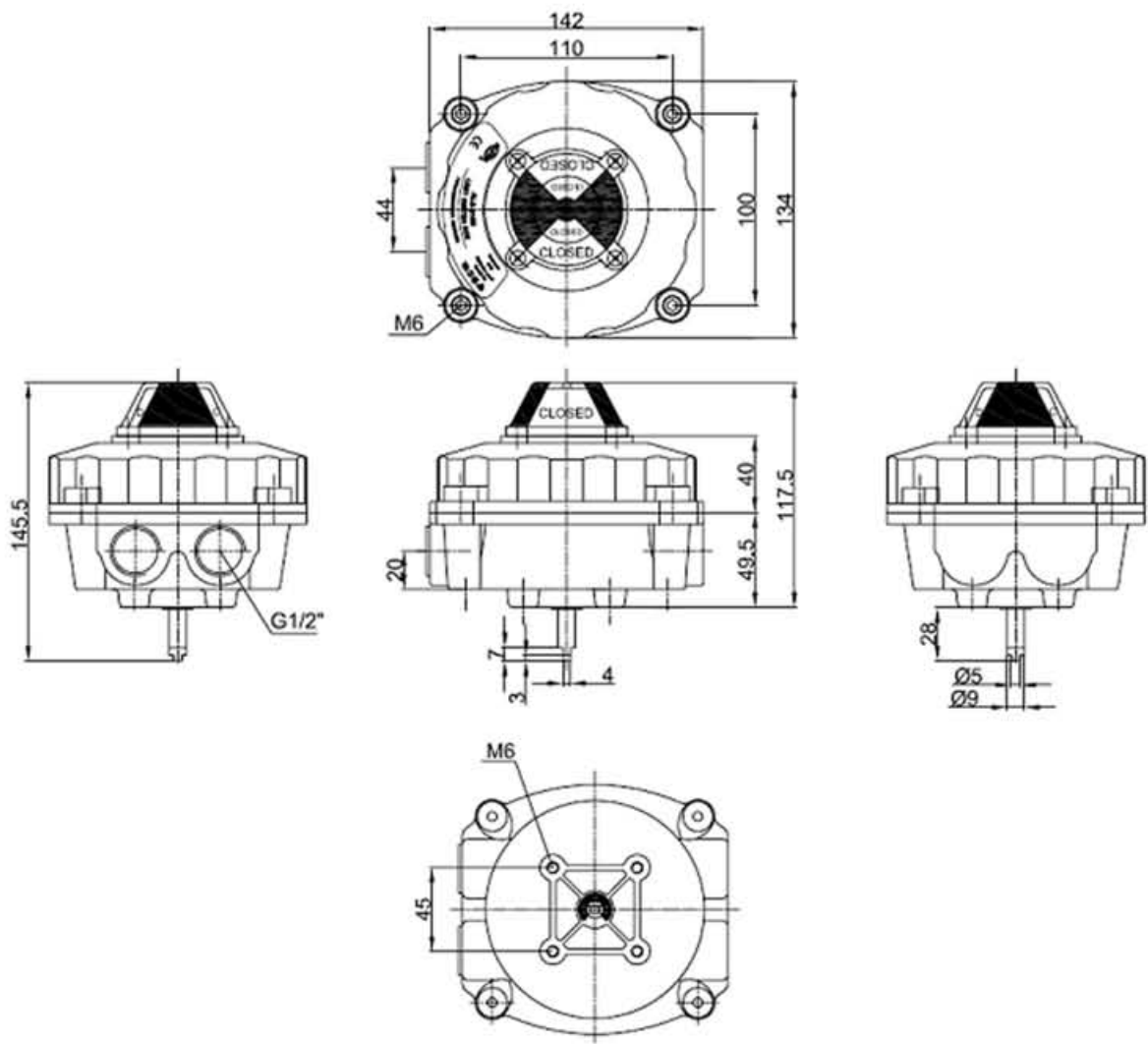
No.	Part Name	Qty.	Material	Picture
1	Box Cover	1	Aluminum Die Casting	
2	Box Body	1	Aluminum Die Casting	
3	Shaft	1	Stainless Steel	
4	Indicator Cover	1	Polycarbonate	
5	Indicator	1	ABS/Polycarbonate	
6	Limit Switch	2	Mechanical	
7	Terminal Strip	8	Polycarbonate Tin Plated Brass Stainless Steel	
8	Cam	2	Polycarbonate	
9	Spring	1	Stainless Steel	
10	Cover Bolts	4	Stainless Steel	
11	Shaft O-ring	2	NBR	
12	Housing O-ring	1	NBR	
13	Indicator O-ring	1	NBR	
14	Bushing	2	Bronze	
15	Earth Lug	1	Stainless Steel	
16	E-ring	1	Stainless Steel	



Specification

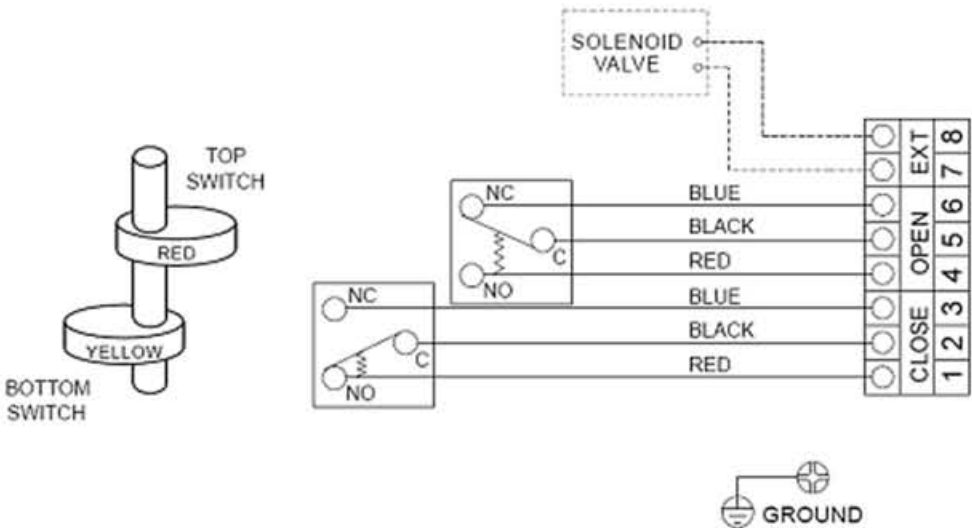
Model	Weather Proof	Enclosure	Ambient	Cable Entry	Terminal Strips	Position Indicator	Switches
CNK-410N	IP67	ExdIIIBT6 (ExdIICT6)	-20°C~85°C	2XG1/2 (2-M20X1.5, 2X1/2NPT)	8Points (9~12Points)	0-90° Open-Yellow Close-Red	Mechanical (16A125-250VAC)

Dimension

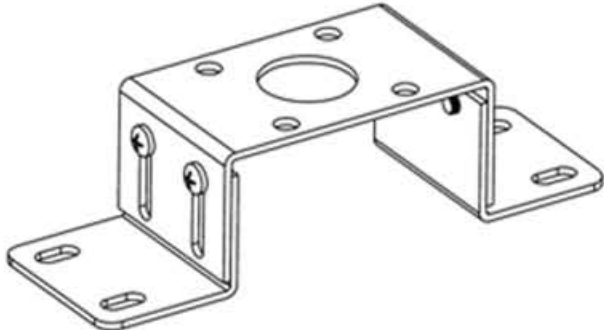


Wiring

MECHANICAL SWITCHES WIRING DIAGRAM



Bracket

Model	Picture	Material	Application
MB-5.1		Steel plate	30x130 H:30~50
		Stainless steel	