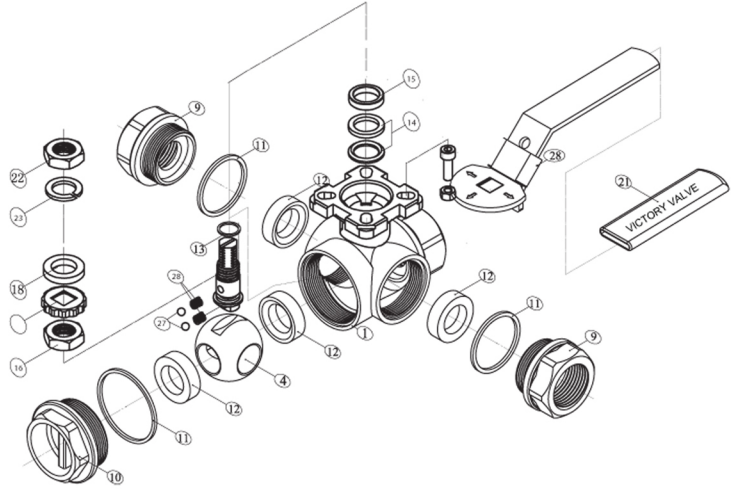


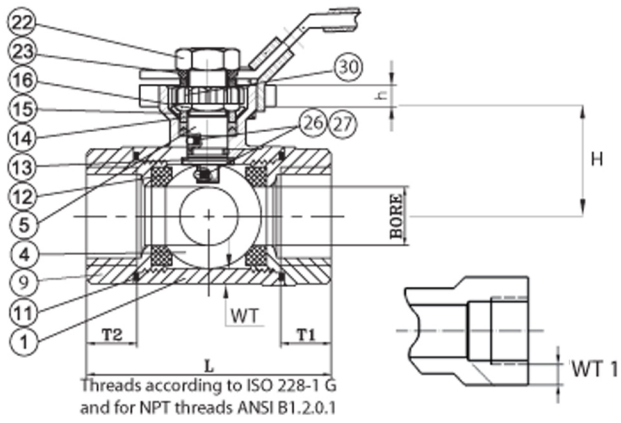
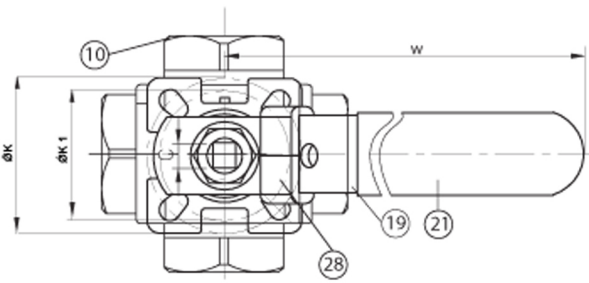


3 Way / L-P Port ISO 5211 Top Flange Scewed End Ball Valve



MATERIAL LIST

NO	PART NAME	MATERIAL
1.	BODY	prEN1503-2/CF8M
4.	BALL	prEN1503-2/CF8M
5.	STEM	SS316
9.	END CAP 3 pieces	prEN1503-2/CF8M
10.	BLIND CAP 1 piece	prEN1503-2/CF8M
11.	BODY SEAL	PTFE 4 pieces
12.	SEAT	PTFE 4 pieces
13.	THRUST WASHER	PTFE
14.	STEM PACKING	PTFE
15.	GLAND	SS304
16.	GLAND NUT	SS304
19.	LEVER	SS304
21.	LEVER COVER	PLASTIC
22.	NUT	SS304
23.	SPRING WASHER	SS304
26.	PLUNGER SPRING	SS316
27.	ANTI STATIC BALL	SS316
28.	LOCKING PAD	SS304
30.	CROWN WASHER	SS304



Dimensions

Size	Size	Bore	W	H	L	H	h	T1	T2	ØK	ØK1	C
1/4"	DN8	8.0	115.0	30.0	75.0	100.0	4.75	15.0	15.0	F04 42.0	F03 35.0	9.0
3/8"	DN10	10.0	115.0	30.0	75.0	100.0	4.75	15.0	15.0	F04 42.0	F03 35.0	9.0
1/2"	DN15	12.5	115.0	35.0	75.0	130.0	5.0	15.0	15.0	F04 42.0	F03 35.0	9.0
3/4"	DN20	15.0	115.0	40.0	85.0	130.0	7.0	20.0	20.0	F04 42.0	F03 35.0	9.0
1"	DN25	20.0	135.0	45.0	102.0	165.0	7.0	20.0	20.0	F05 50.0	F04 42.0	11.0
1-1/4"	DN32	25.0	185.0	50.0	120.0	165.0	7	23.5	23.5	F05 50.0	F04 42.0	11.0
1-1/2"	DN40	32.0	185.0	70.0	120.0	190.0	7.0	23.5	23.5	F07 70.0	F05 50.0	14.0
2"	DN50	40.0	200.0	80.0	150.0	190.0	7.0	25.0	25.0	F07 70.0	F05 50.0	14.0

DN	ID	WT1 PN63	WT PN63
8	8,88	3,2	2,9
10	12,49	3,4	3
15	15,76	3,6	3,2
20	20,96	3,9	4,1
25	33,4	4,2	5,2
DN	ID	WT 1 PN40	WT PN40
32	35,28	3,8	4,8
40	40,94	4,1	5
50	52,48	4,6	5,3